

August 30, 2024

ADDENDUM NO. 1

Latino Community Credit Union - Morrisville Project

This Addendum shall be considered part of the RFQ Documents for the above mentioned project as though it had been issued at the same time and shall be incorporated integrally therewith. Where provisions of the following supplementary data differ from those of the original bid documents, this Addendum shall govern and take precedence.

Firms are hereby notified that they shall make any necessary adjustments in their package as a result of this Addendum. It will be construed that each firm's package is submitted with full knowledge of all modifications and supplemental data specified herein. Bidders shall acknowledge receipt of this addendum on the cover sheet of their bid packages.

I. Bid Date

The bid due date will be extended to the end of the day, **Thursday, September 26, 2024**. The proposal can be emailed to bstallings@labellapc.com, or mailed/hand delivered to:

Bernie Stallings, Project Manager
LaBella Associates
400 South Tryon Street, Suite 1300
Charlotte, NC 28285

II. Drawings

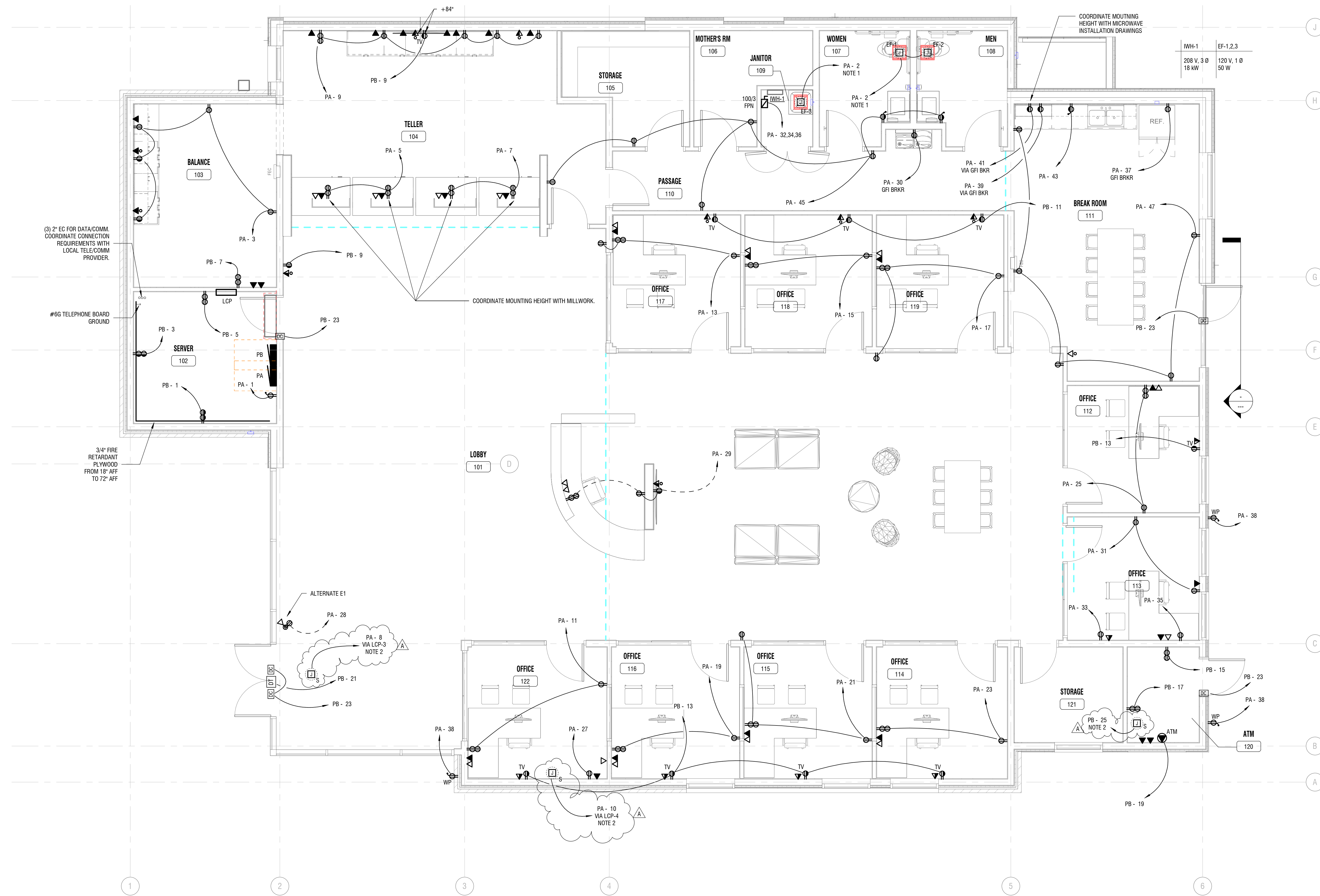
The following drawing has been revised, clouded as Addendum 1 and attached.

- E101
- E401

On Sheet A001 regarding wall types W4 and W5 for Thin Masonry, please use 2 ¾" DP2 – double drainage ProGuard system. This allows the rigid to maintain an R value of R7.5.

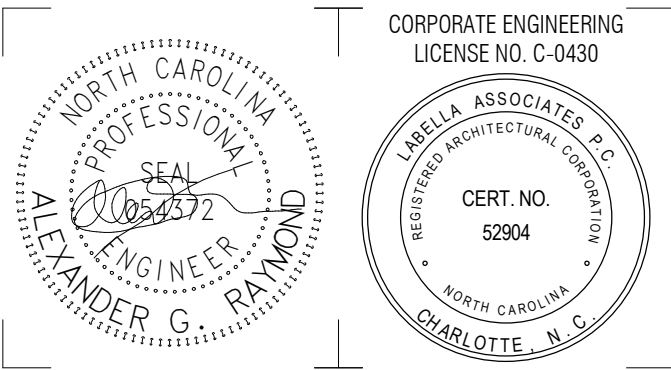
LaBella Associates
400 S. Tryon Street Charlotte NC

ALTERNATE E1
 - INSTALL POWER AND DATA COMBINATION RECEPTACLE FOR COIN SORTER.



1 ELECTRICAL FLOOR PLAN
 E101 1/4" = 1'-0"

- NOTES:
 1. INTERLOCK EXHAUST FAN CONTROLS WITH LIGHTING CIRCUIT IN THIS AREA.
 2. CONNECTION TO BUILDING SIGNAGE. COORDINATE OWNERS WITH VENDOR AND MAKE FINAL CONNECTION.



© 2024 LaBella Associates



LCCU - Morrisville Site Adapt
 9521 Chapel Hill RD, Morrisville, NC 27560

A	08.30.2024	ADDENDUM 1
NO.	DATE:	DESCRIPTION:

PROJECT NUMBER: 2230150

DRAWN BY: ZCJ

REVIEWED BY: AGR

ISSUED FOR: BID SET

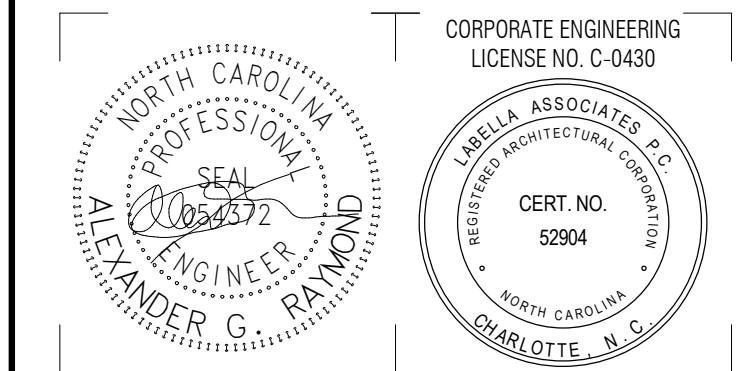
DATE: 08.30.2024

DRAWING NAME:

ELECTRICAL FLOOR PLAN

DRAWING NUMBER:

E101



08.30.2024
© 2024 LaBella Associates



LCCU - Morrisville Site Adapt
9521 Chapel Hill RD, Morrisville, NC 27560

A	08.30.2024	ADDENDUM 1
NO.	DATE:	DESCRIPTION:
Revisions		

PROJECT NUMBER: 2230150

DRAWN BY: ZCJ

REVIEWED BY: AGR

ISSUED FOR: BID SET

DATE: 08.30.2024

DRAWING NAME:

ELECTRICAL DETAILS AND RISER DIAGRAM

DRAWING NUMBER:

E401

Branch Panel: PA

Location: SERVER 102
Supply From:
Mounting: SURFACE
Enclosure: NEMA 1

Volts: 120/208 Wye
Phases: 3
Wires: 4

A.I.C. Rating: 18 kAIC
Mains Type: MCB
Mains Rating: 400 A
MCB Rating: 400 A

Notes:

CKT	Circuit Description	Cond	Wire	Tripp	Poles	A	B	C	Poles	Tripp	Wire	Cond	Circuit Description	CKT	
1	PANEL RECPT	3/4	12	20 A	1	180	637		1	20 A	12	3/4	TELLER LIGHTING	2	
3	BALANCE RECPTS	3/4	12	20 A	1		900	905		1	20 A	12	3/4	OFFICE LIGHTING	4
5	TELLER RECPTS	3/4	12	20 A	1			720	934	1	20 A	12	3/4	LOBBY LIGHTING	6
7	TELLER RECPTS	3/4	12	20 A	1	720	1200			1	20 A	12	3/4	SIGN OUTLET	8
9	BACK COUNTER RECPTS	3/4	12	20 A	1		1080	1200		1	20 A	12	3/4	SIGN OUTLET	10
11	OFFICE 122 RECPTS	3/4	12	20 A	1			860	362	1	20 A	12	3/4	BUILDING/CANOPY LIGHTING	12
13	OFFICE 117 RECPTS	3/4	12	20 A	1	720	468			1	20 A	12	3/4	SITE LIGHTING	14
15	OFFICE 118 RECPTS	3/4	12	20 A	1		540	500		1	20 A	12	3/4	BACKFLOW HEAT TAPE	16
17	OFFICE 119 RECPTS	3/4	12	20 A	1			720	500	1	20 A	12	3/4	BACKFLOW HEAT TAPE	18
19	OFFICE 116 RECPTS	3/4	12	20 A	1	540	0			1	20 A	--	--	SPARE	20
21	OFFICE 115 RECPTS	3/4	12	20 A	1		720	0		1	20 A	--	--	SPARE	22
23	OFFICE 114 RECPTS	3/4	12	20 A	1			540	0	1	20 A	--	--	SPARE	24
25	OFFICE 112 RECPTS	3/4	12	20 A	1	540	0			1	20 A	--	--	SPARE	26
27	COPIER	3/4	12	20 A	1		500	500		1	20 A	12	3/4	COIN SORTER	28
29	RECEPTION RECPTS	3/4	12	20 A	1			790	670	1	20 A	12	3/4	EWV*	30
31	PRINT RECPTS	3/4	12	20 A	1	680	6000								32
33	COPIER	3/4	12	20 A	1		500	6000		3	75 A	8	3/4	IWH-1	34
35	COPIER	3/4	12	20 A	1			500	6000						36
37	FRIDGE*	3/4	12	20 A	1	670	900			1	20 A	12	3/4	ROOF RECPTS	38
39	MICROWAVE*	3/4	12	20 A	1		1000	1144		2	25 A	12	3/4	ODU-1	40
41	MICROWAVE*	3/4	12	20 A	1			1000	1144						42
43	COFFEE MAKER	3/4	12	20 A	1	1000	3600								44
45	PASSAGE RECPTS	3/4	12	20 A	1		1260	3600		3	45 A	10	3/4	RTU-1	46
47	BREAK RECPTS	3/4	12	20 A	1			900	3600						48
49						4170	7200								50
51	PB	1-1/4	3	100 A	3		1410	7200		3	80 A	6	1	RTU-2	52
53								1860	7200						54
Total Load:						29202 VA	28959 VA	28292 VA							
Total Amps:						244 A	242 A	236 A							

Load Classification	Connected Load	Demand Factor	Estimated Demand	Panel Totals
HVAC	34838 VA	100.00%	34838 VA	
Lighting	2684 VA	125.00%	3355 VA	Total Conn. Load: 86453 VA
Lighting - Exterior	468 VA	125.00%	585 VA	Total Est. Demand: 89984 VA
Other	16990 VA	100.00%	16990 VA	Total Conn.: 240 A
Receptacle	13500 VA	87.04%	11750 VA	Total Est. Demand: 250 A
Water Heater	18000 VA	125.00%	22500 VA	

- Notes:
1. PROVIDE CIRCUITS INDICATED BY *** WITH GFCI TYPE BREAKERS.

Branch Panel: PB

Location: SERVER 102
Supply From: PA
Mounting: SURFACE
Enclosure: NEMA 1

Volts: 120/208 Wye
Phases: 3
Wires: 4

A.I.C. Rating: 18 kAIC
Mains Type: MLO
Mains Rating: 100 A
MCB Rating: N/A

Notes:

CKT	Circuit Description	Cond	Wire	Tripp	Poles	A	B	C	Poles	Tripp	Wire	Cond	Circuit Description	CKT	
1	SERVER RECPTS	3/4	12	20 A	1	360	0		1	20 A	--	--	SPARE	2	
3	SERVER RECPTS	3/4	12	20 A	1		360	0		1	20 A	--	--	SPARE	4
5	SERVER RECPTS	3/4	12	20 A	1			360	0	1	20 A	--	--	SPARE	6
7	SAFE RECPT	3/4	12	20 A	1	360	0			1	20 A	--	--	SPARE	8
9	TV RECPTS	3/4	12	20 A	1		500	0		1	20 A	--	--	SPARE	10
11	TV RECPTS	3/4	12	20 A	1			750	0	1	20 A	--	--	SPARE	12
13	TV RECPTS	3/4	12	20 A	1	1250	0			1	20 A	--	--	SPARE	14
15	ATM EQUIPMENT	3/4	12	20 A	1		500	0		1	20 A	--	--	SPARE	16
17	ATM EQUIPMENT	3/4	12	20 A	1			500	0	1	20 A	--	--	SPARE	18
19	ATM	3/4	12	20 A	1	1000	0			1	20 A	--	--	SPARE	20
21	SECURITY DEVICES	3/4	12	20 A	1		50	0		1	20 A	--	--	SPARE	22
23	SECURITY DEVICES	3/4	12	20 A	1			250	0	1	20 A	--	--	SPARE	24
25	ATM SIGN	3/4	12	20 A	1	1200	0			1	20 A	--	--	SPARE	26
27	SPARE	--	--	20 A	1		0	0		1	20 A	--	--	SPARE	28
29	SPARE	--	--	20 A	1			0	0	1	20 A	--	--	SPARE	30
31	SPACE	--	--	1	--	--				1	--	--	--	SPACE	32
33	SPACE	--	--	1	--	--				1	--	--	--	SPACE	34
35	SPACE	--	--	1	--	--				1	--	--	--	SPACE	36
37	SPACE	--	--	1	--	--				1	--	--	--	SPACE	38
39	SPACE	--	--	1	--	--				1	--	--	--	SPACE	40
41	SPACE	--	--	1	--	--				1	--	--	--	SPACE	42
Total Load:						4170 VA	1410 VA	1860 VA							
Total Amps:						35 A	12 A	16 A							

Load Classification	Connected Load	Demand Factor	Estimated Demand	Panel Totals
Other	6000 VA	100.00%	6000 VA	
Receptacle	1440 VA	100.00%	1440 VA	Total Conn. Load: 7440 VA
				Total Est. Demand: 7440 VA
				Total Conn.: 21 A
				Total Est. Demand: 21 A

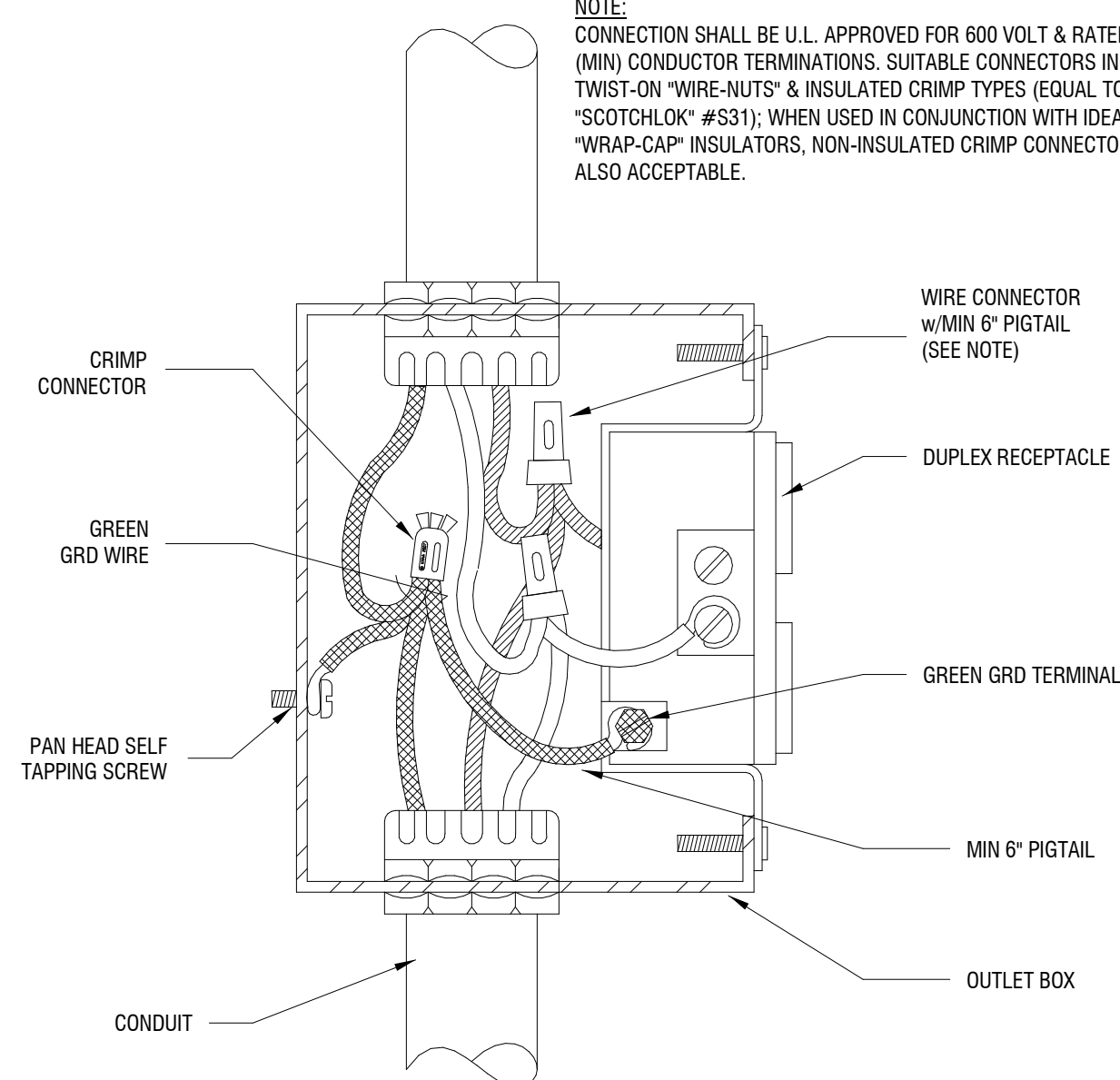
Notes:

LCP

RELAY #	CIRCUIT CONTROLLED	CONTROL	VOLTAGE	AREA	XX
1	PA-2	TIMECLOCK ON/OFF	120	TELLER	A-1
2	PA-6	TIMECLOCK ON/OFF	120	LOBBY	A-1
3	PA-8	PHOTOCELL ON/TIMECLOCK OFF	120	SIGN	
4	PA-10	PHOTOCELL ON/TIMECLOCK OFF	120	SIGN	
5	PA-12	PHOTOCELL ON/TIMECLOCK OFF	120	BUILDING LIGHTING	
6	PA-14	PHOTOCELL ON/TIMECLOCK OFF	120	PARKING LIGHTING	
7	SPARE		120		
8	SPARE		120		

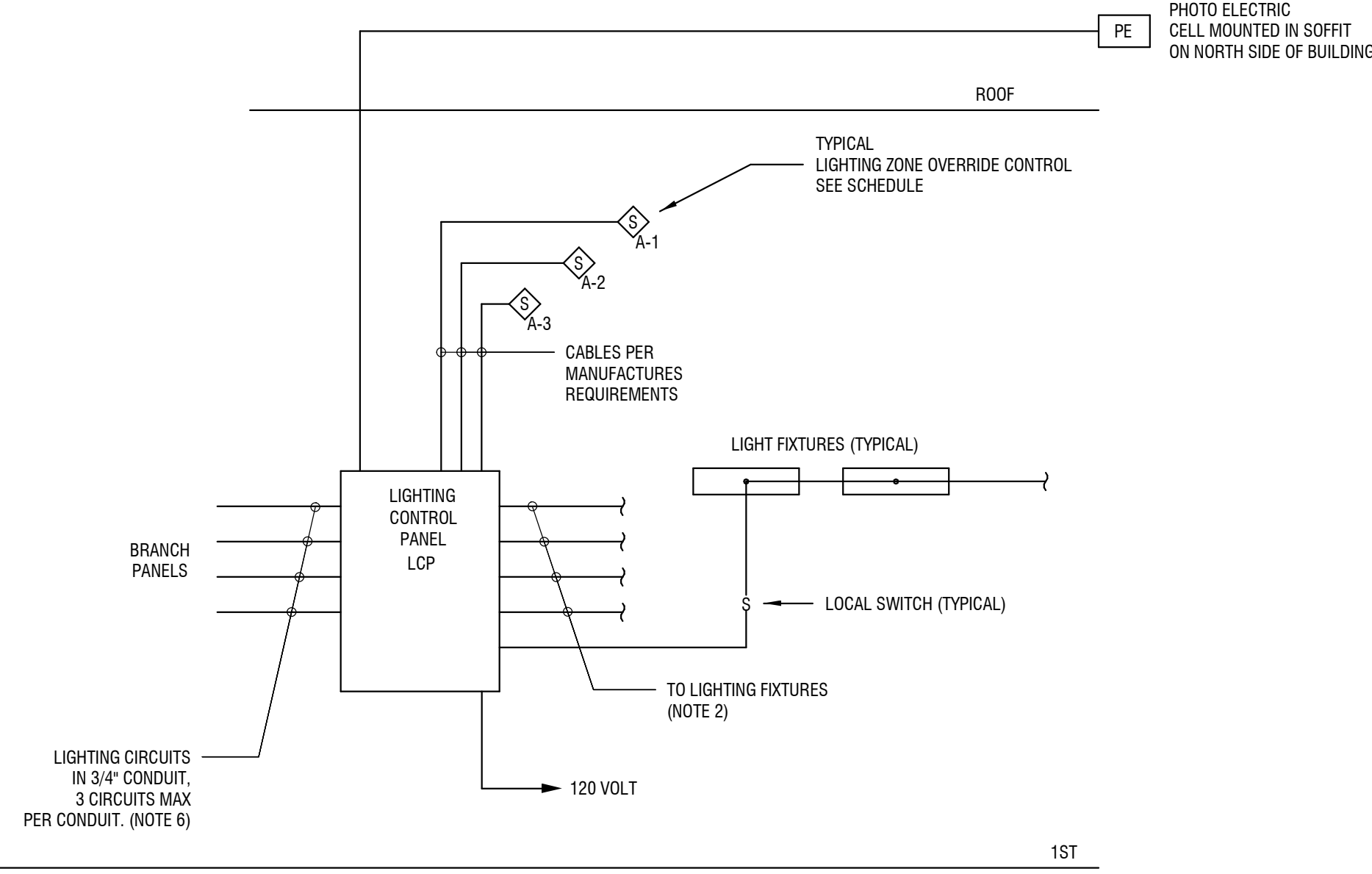
- NOTES:
1. LIGHTING CONTROL SYSTEM SHALL HAVE MINIMUM 8 INDIVIDUALLY PROGRAMMABLE RELAYS, RJ45 INTERFACE, DAYLIGHT SAVINGS TIME ADJUSTMENT, ASTRONOMICAL CLOCK AND BE UL LISTED (508 AND 916), PROVIDE "XPS" SYSTEM (BY LUTRON), "ILC" SYSTEM (BY LEVITON) OR EQUIVALENT AND EQUAL SYSTEM (BY WATT STOPPER).
2. INTERIOR LIGHTING FIXTURES POWERED THROUGH LIGHTING CONTROL CENTER SHALL BE TURNED ON IN THE MORNING AND SWEEP OFF AT A TIME DETERMINED BY OWNER/TENANT AT NIGHT. PROVIDE MOMENTARY OVERRIDE SWITCH(ES) WHERE INDICATED FOR CORRIDOR LIGHTING OVERRIDE. THE OVERRIDE SWITCH(ES) SHALL PROVIDE NO MORE THAN 2 HOURS OF ADDITIONAL LIGHTING. PROVIDE ENGRAVED NAMEPLATE ABOVE EACH SWITCH THAT READS "LIGHTING OVERRIDE". SWITCH AND PLATE COLOR SHALL MATCH OTHER DEVICES.
3. INSTALLATION SHALL BE IN ACCORDANCE WITH THE MANUFACTURERS RECOMMENDATIONS. PROVIDE ALL PANELS, RELAYS, ACCESSORIES, CONDUIT, CONDUCTORS, PROGRAMMING, ETC. AS REQUIRED FOR A COMPLETE AND OPERATIONAL SYSTEM.
4. PROVIDE SERVICES OF A MANUFACTURERS AUTHORIZED SERVICE TECHNICIAN TO ASSIST WITH INSTALLATION, PROGRAMMING AND TRAINING OF THE SYSTEM.
5. ALL VACANCY SENSORS SHALL BE DUAL TECHNOLOGY.
6. PROVIDE DIVIDERS TO SEPARATE EMERGENCY AND NON-EMERGENCY LOADS WHERE REQUIRED.
7. EMERGENCY FIXTURES REQUIRE A UNSWITCHED WIRE TO FIXTURE FOR TO POWER CHARGING CIRCUIT.

NOTE:
CONNECTION SHALL BE U.L. APPROVED FOR 600 VOLT & RATED FOR 75°C (MINI) CONDUCTOR TERMINATIONS, SUITABLE CONNECTORS INCLUDE TWIST-ON WIRE-NUTS & INSULATED CRIMP TYPES (EQUAL TO "SCOTCHLOK" #S31); WHEN USED IN CONJUNCTION WITH IDEAL "WRAP-CAP" INSULATORS, NON-INSULATED CRIMP CONNECTORS ARE ALSO ACCEPTABLE.



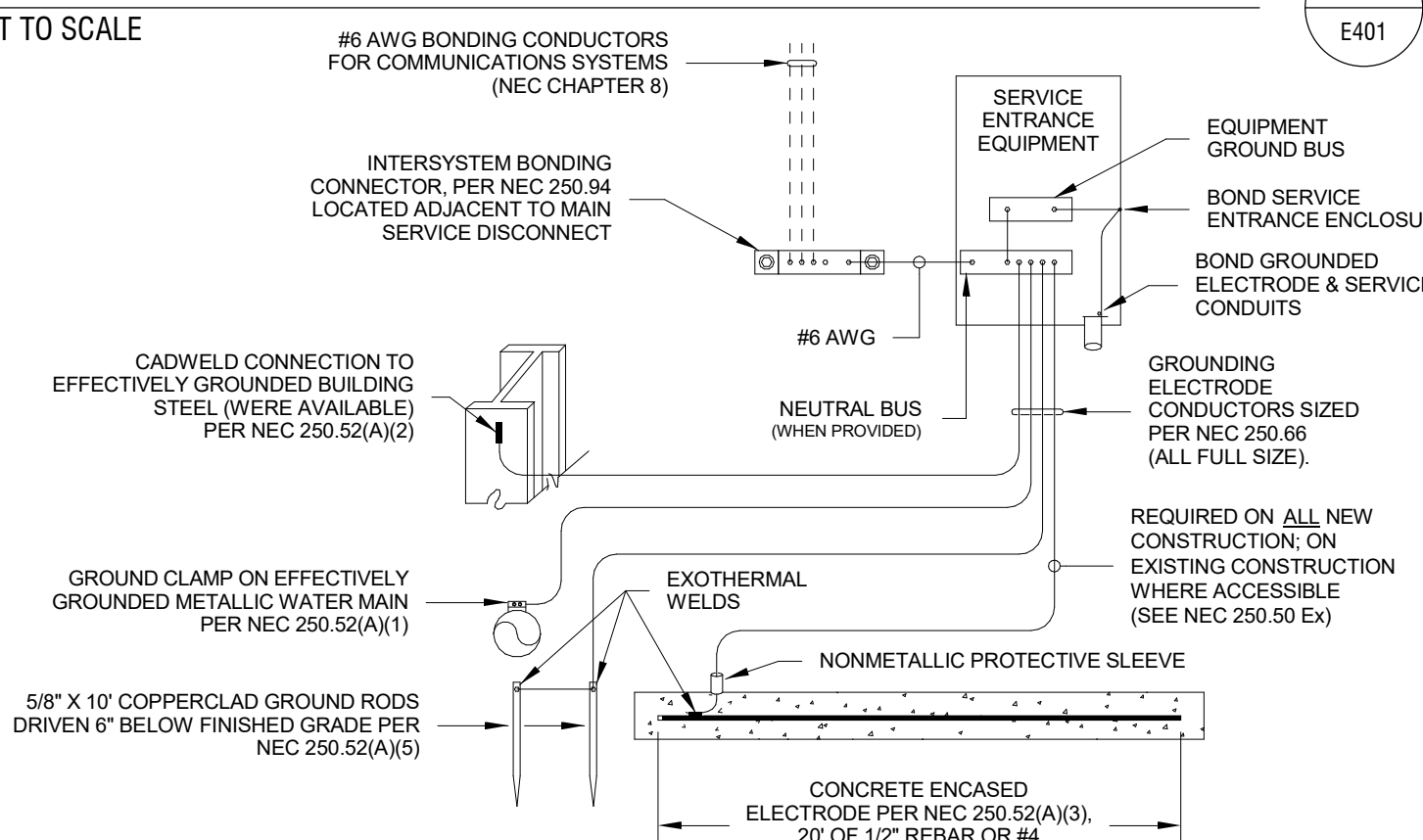
5 TYPICAL DEVICE WIRING DETAIL

E401 NOT TO SCALE



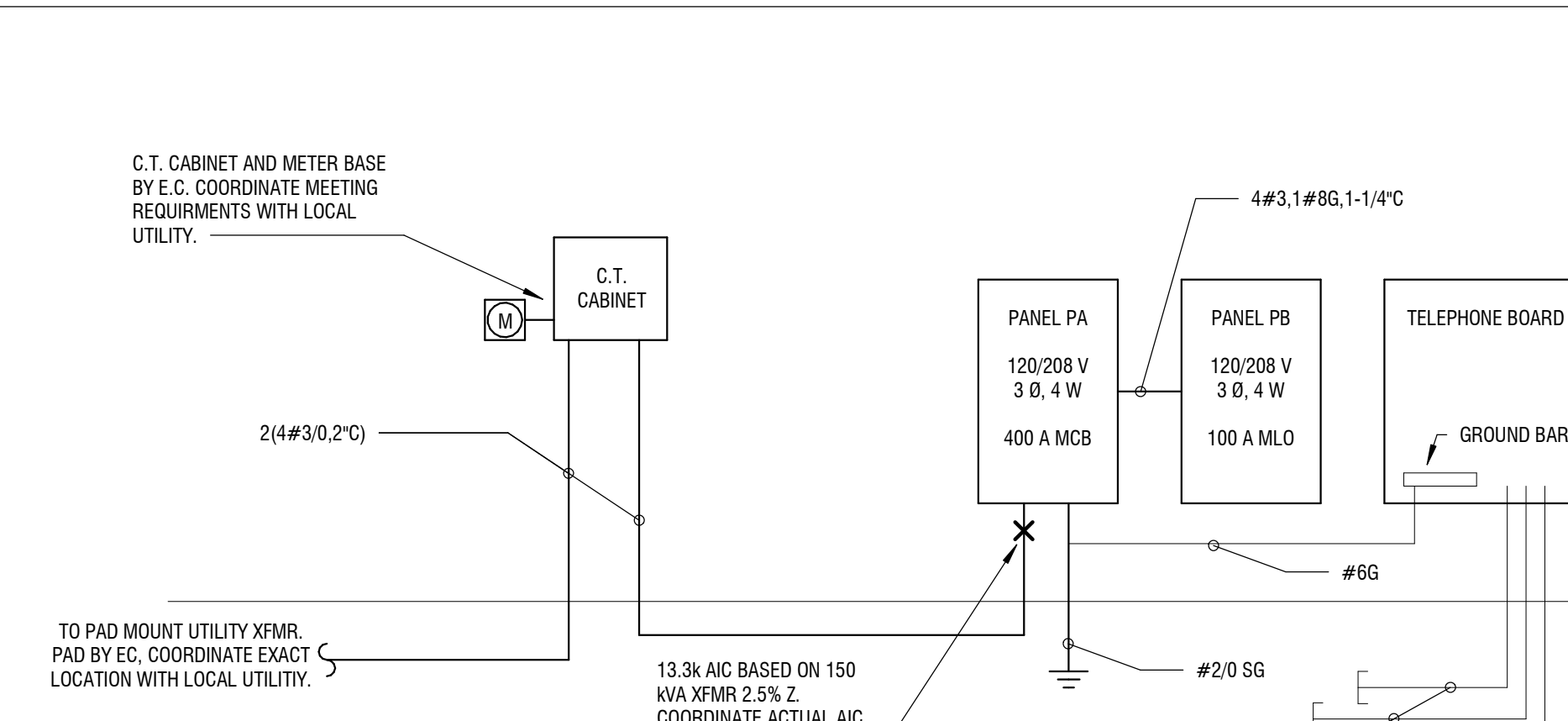
4 LIGHTING CONTROL PANEL DETAIL

E401 NOT TO SCALE



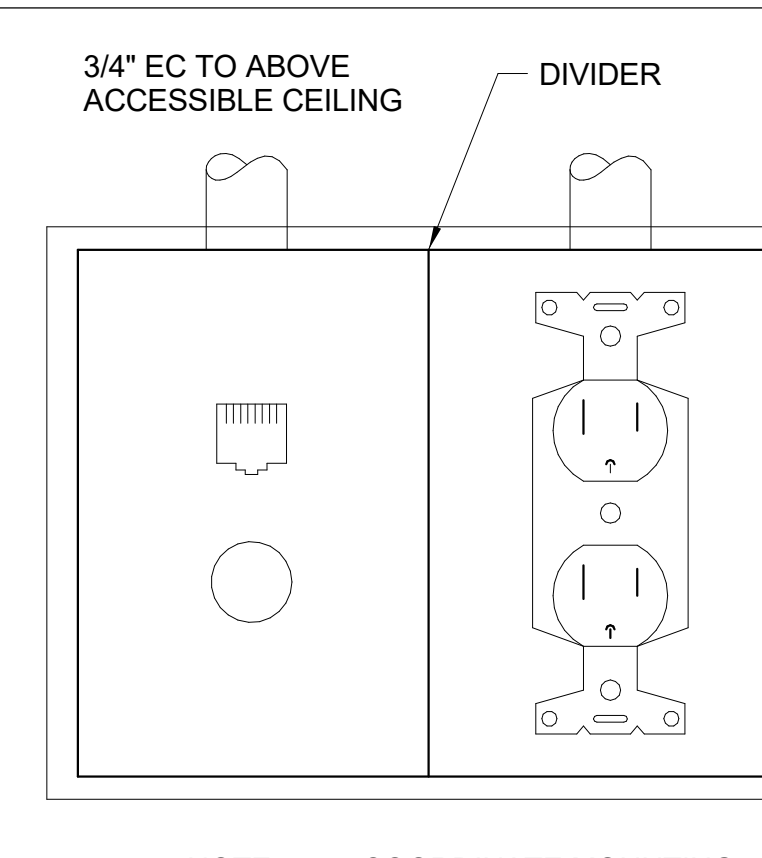
3 GROUNDING DETAIL

E401 NOT TO SCALE



2 POWER RISER DIAGRAM

E401 NOT TO SCALE



NOTE: COORDINATE MOUNTING HEIGHT WITH ARCHITECT AND G.C.

1 TV OUTLET

E401 NOT TO SCALE