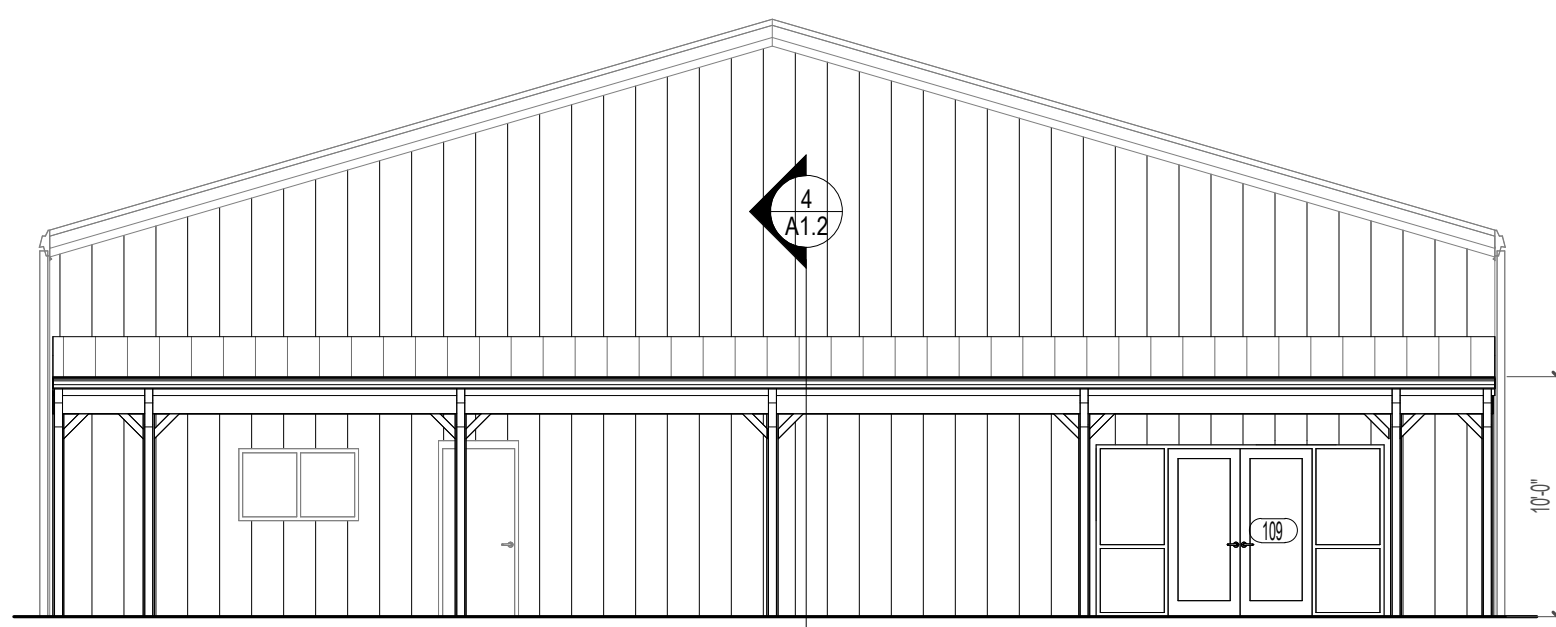
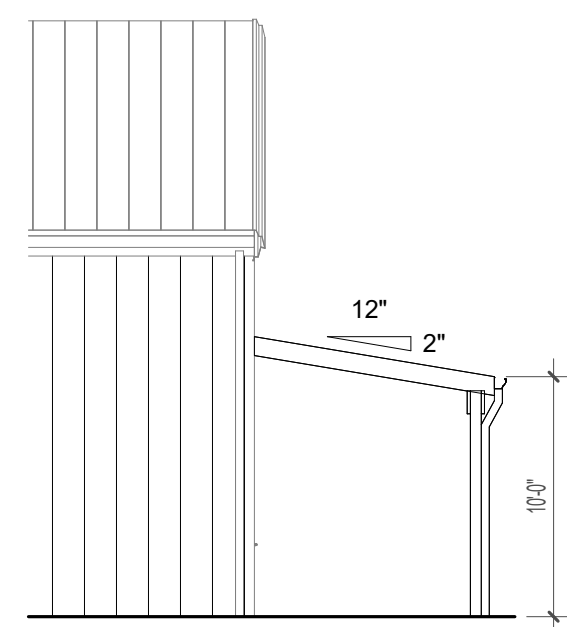


6 REFLECTED CEILING PLAN
1/16" = 1'-0"

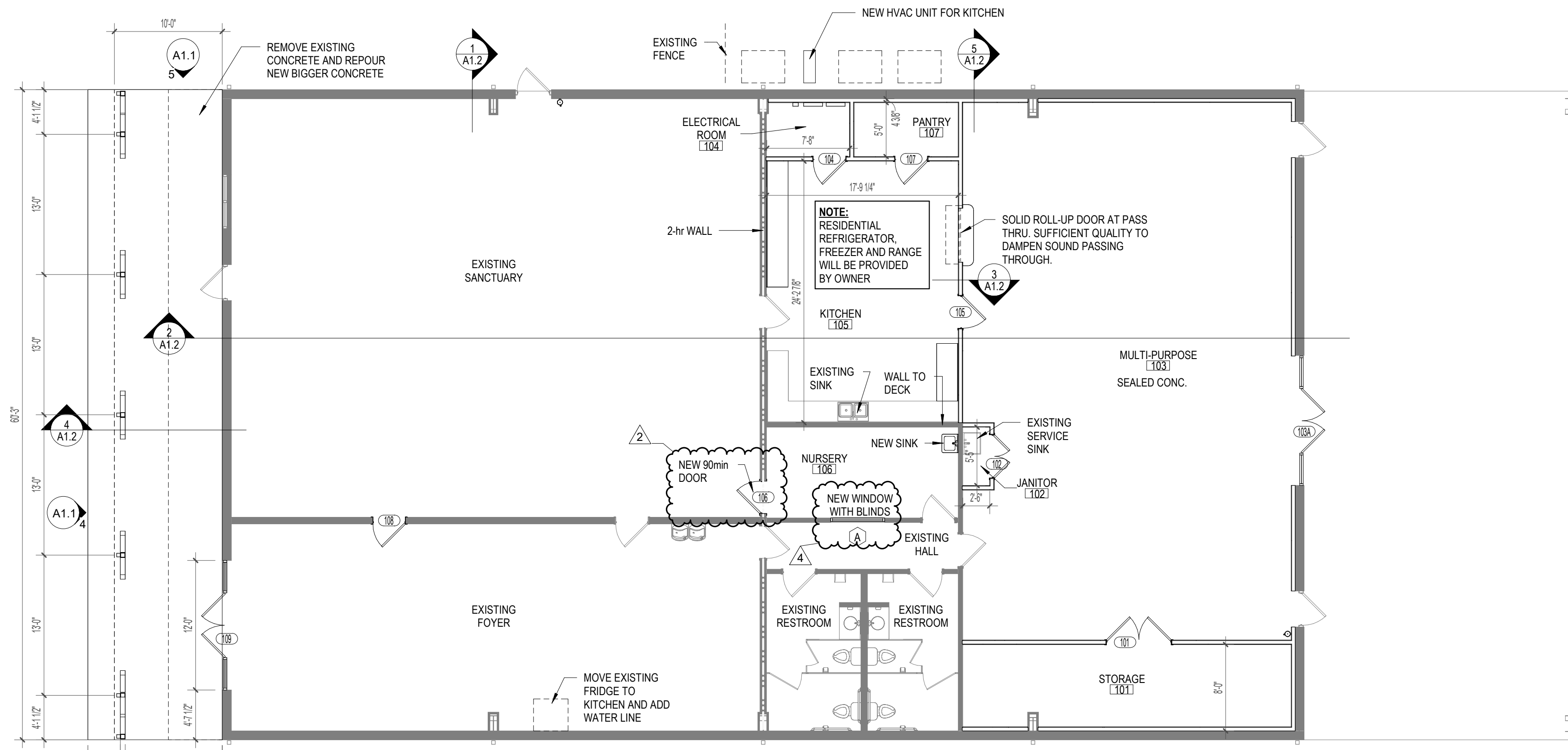
*PRICE THE INSULATION OF THE WALLS & CEILING OF THE EXISTING SPACES AS ALTERNATE 1. DO NOT INCLUDE IN THE BASE BID.



4 FRONT ELEVATION
1/8" = 1'-0"

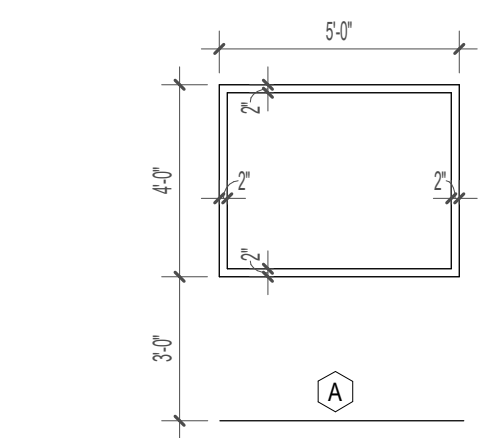


5 SIDE ELEVATION
1/8" = 1'-0"

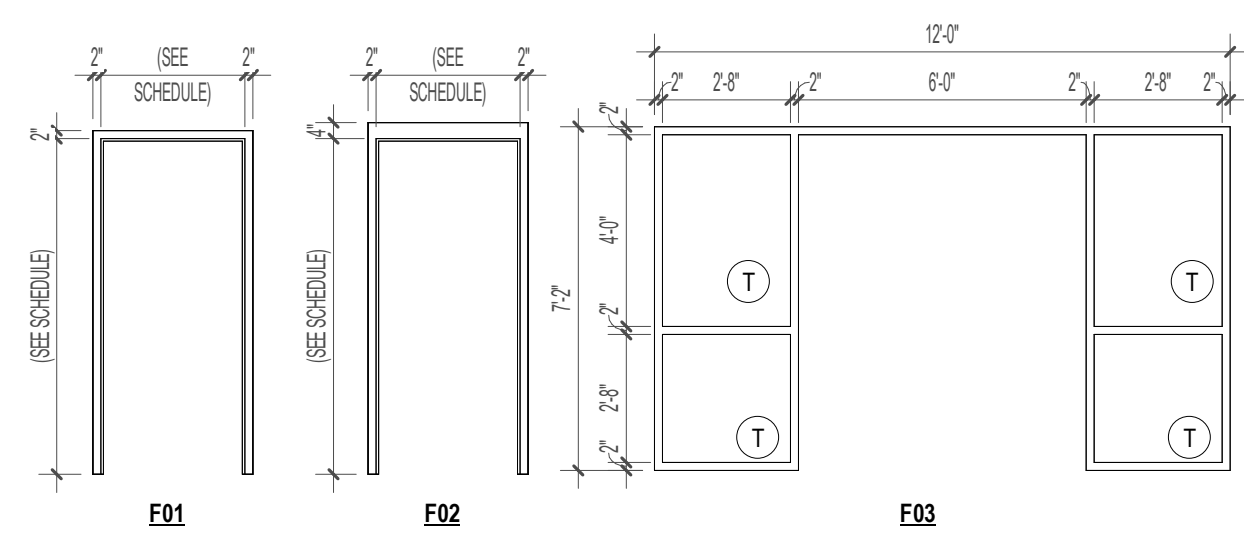


1 NEW - FLOOR PLAN
1/8" = 1'-0"

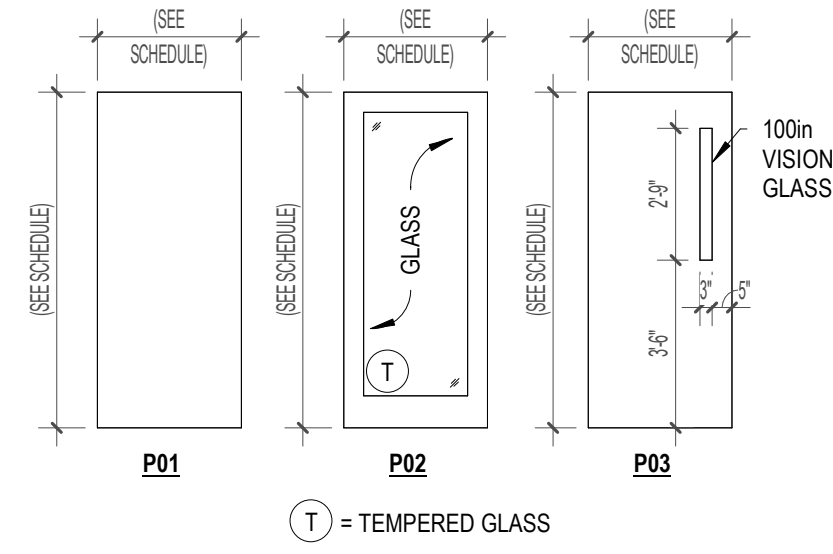
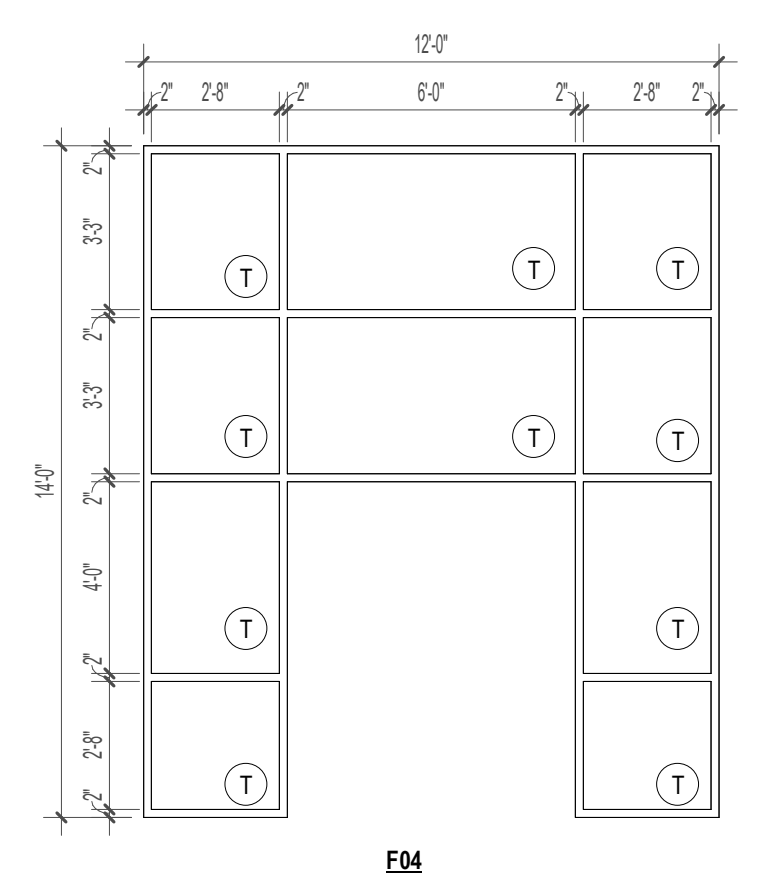
| No. | Name | Wall | Floor | Base | Ceiling | Remarks |
|-----|------------------|-------------|----------|--------|------------|-----------------------------|
| 101 | STORAGE | PAINT'D GYP | CONCRETE | RUBBER | ACT | IMPACT RESISTANT SHEET ROCK |
| 102 | JANITOR | PAINT'D GYP | CONCRETE | RUBBER | ACT | |
| 103 | MULTI-PURPOSE | PAINT'D GYP | CONCRETE | RUBBER | ACT | PROVIDE ALT. FOR LVT |
| 104 | ELECTRICAL ROOM | PAINT'D GYP | CONCRETE | RUBBER | ACT | |
| 105 | KITCHEN | PAINT'D GYP | CONCRETE | RUBBER | ACT | PROVIDE ALT. FOR Q. TILE |
| 106 | NURSERY | PAINT'D GYP | EXISTING | RUBBER | ACT | |
| 107 | PANTRY | PAINT'D GYP | CONCRETE | RUBBER | ACT | |
| 108 | EXISTING WORSHIP | PAINT'D GYP | EXISTING | RUBBER | 2x2 LAY-IN | |
| 109 | EXISTING LOBBY | PAINT'D GYP | EXISTING | RUBBER | ACT | |



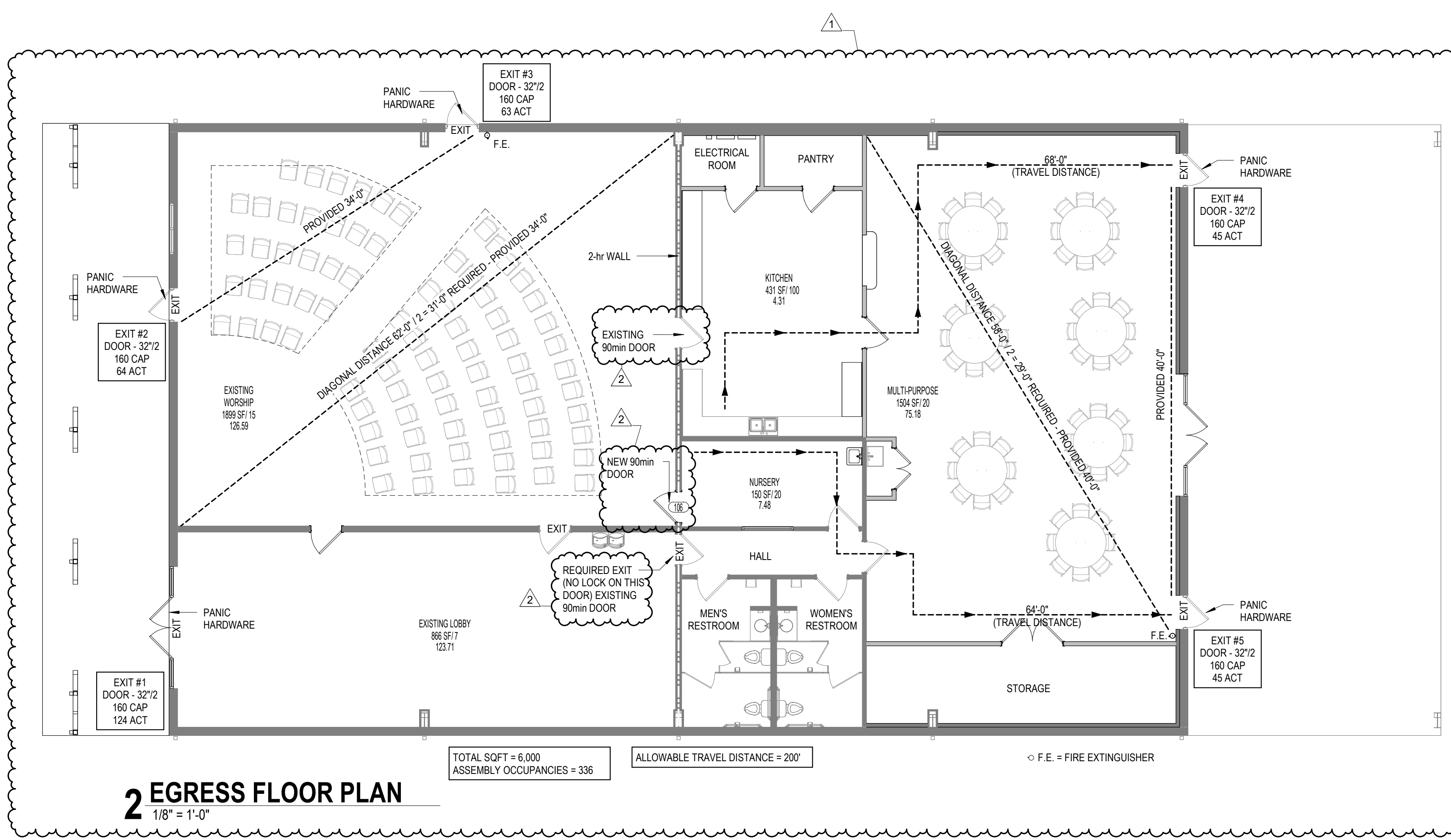
ELEVATIONS - WINDOW
1/4" = 1'-0"



ELEVATIONS - FRAME
1/4" = 1'-0"

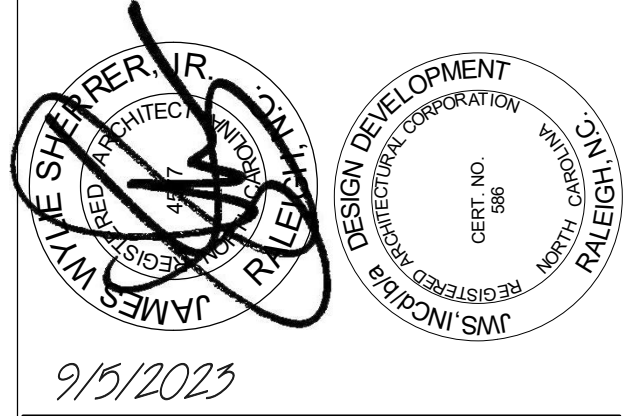


ELEVATIONS - LEAF
1/4" = 1'-0"



2 EGRESS FLOOR PLAN
1/8" = 1'-0"

| Door Schedule (All) | | | | | | | | | | | | | |
|---------------------|------|-------|-------|-------|------|----------|-------|------|--|----------|-------|---------|-------------------------------|
| No. | Qty. | DOOR | | | TYPE | MATL | FRAME | | | W. Strip | THRES | CLOSERS | NOTES |
| | | W | H | T | | | TYPE | MATL | | | | | |
| 101 | 2 | 6'-0" | 7'-0" | 13/4" | P01 | WOOD | F01 | H.M. | | | | | |
| 102 | 2 | 4'-0" | 7'-0" | 13/4" | P01 | WOOD | F01 | H.M. | | | | | |
| 103A | 2 | 6'-0" | 7'-0" | 13/4" | P02 | H.M. | F04 | H.M. | | | | | FIELD VERIFY EXISTING OPENING |
| 104 | 1 | 3'-0" | 7'-0" | 13/4" | P01 | S.C.W.D. | F01 | H.M. | | | | | |
| 105 | 1 | 3'-0" | 7'-0" | 13/4" | P01 | S.C.W.D. | F01 | H.M. | | | | | |
| 106 | 1 | 3'-0" | 7'-0" | 13/4" | P01 | S.C.W.D. | F01 | H.M. | | | | | 90min DOOR |
| 107 | 1 | 3'-0" | 7'-0" | 13/4" | P01 | S.C.W.D. | F01 | H.M. | | | | | |
| 108 | 1 | 3'-0" | 7'-0" | 13/4" | P01 | S.C.W.D. | F01 | H.M. | | | | | |
| 109 | 2 | 6'-0" | 7'-0" | 13/4" | P02 | H.M. | F03 | H.M. | | | | | |



LIFEPPOINT CHURCH PHASE 1 FITUP
3390 JOHN ADAMS RD
WILLOW SPRINGS
NORTH CAROLINA

| No. | Description | Date |
|-----|-----------------|---------|
| 1 | REVIEW COMMENTS | 2/22/23 |
| 2 | REVIEW COMMENTS | 4/26/23 |
| 3 | FINISH SCHEDULE | 8/29/23 |
| 4 | BID REVISIONS | 9/5/23 |

PROJECT #: 210025
DATE: 4/26/2023

FLOOR PLAN AND CEILING PLANS